

DESCRIPTIONS

Concealed Hinged Access Door is designed for both ceiling and wall applications, the GFR panel can be used anywhere a locked door is required but style is still of utmost importance. The seamless design of these access doors blend into the surrounding drywall for a clean, upscale appearance.

FEATURES

- **ECO FRIENDLY** - These panels contain a 70% postconsumer recycled glass content for a truly GREEN product.
- **OPTIONAL LOCKS** - Constructed with european style hinges and choice of screwdriver cam latch or keyed cam lock.
- **CORNER OPTIONS** - Standard and custom sizes available in radius or square corners.

SPECIFICATIONS

DOOR: Gypsum Fiber Reinforced

FRAME: Gypsum Fiber Reinforced

DOOR SHAPE: Radius Corner or Square Corner

SIZE:
Min: 6 inches by 6 inches
Max: 30 inches by 30 inches

INSTALLATION: Walls or Ceilings

FLANGE: Drywall Bead

HINGE: European

FINISH: Unfinished Gypsum, Natural Gypsum White

WARRANTY: 1 year

For a complete list of options visit www.AccessDoorsAndPanels.com



SKU: **N GFR**

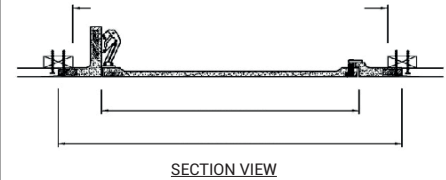
CONCEALED HINGED ACCESS DOOR

DIMENSIONS AND APPEARANCE

>> [CLICK TO VIEW ADDITIONAL DETAILS AND PRICING](#) <<

ORDER GUIDE:

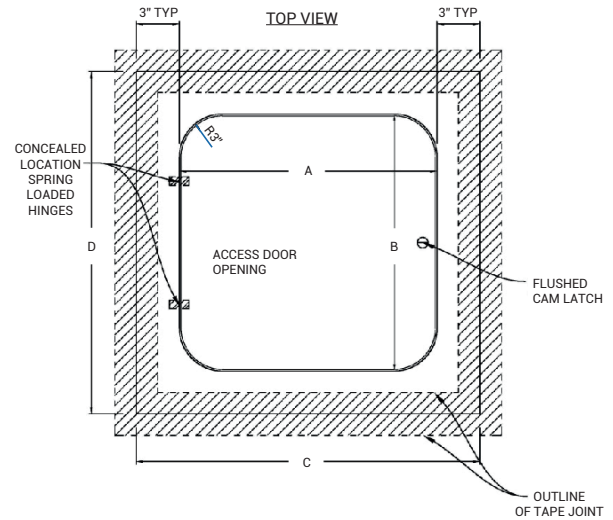
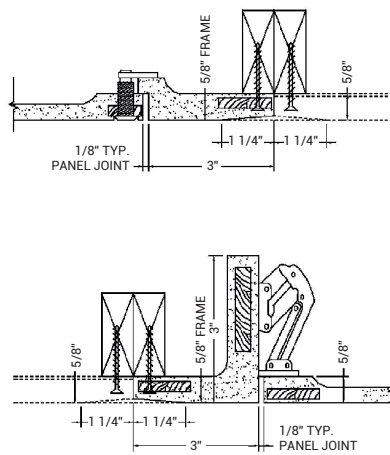
BASE	DOOR SHAPE	LATCH	WIDTH	X	LENGTH
BGFR					
	R - Radius Corner S - Square Corner	C - Screwdriver Cam Latch L - Keyed Cam Lock	STANDARD SIZES (W XL)		
			9" X 9"	18" X 18"	
			12" X 12"	24" X 24"	
			16" X 16"	30" X 30"	



Rough opening is door size + 6 inches.

Additional sizes available, call for more information.

For detailed specifications see submittal sheet



PROJECT DATA

Custom Sizes Available - Fast!

Scan or Click



To view Pricing and Additional Product Info.

PROJECT NAME :	QTY	W	H	OPTIONS
ARCHITECT :				
DEALER :				
CONTRACTOR :				
LOCATION :	SPECIAL INSTRUCTIONS :			
DATE :	SUBMITTAL APPROVAL : (signature or stamp)			
TAGGING INSTRUCTIONS :				

TELEPHONE:
1-888-457-1275
FAX:
1-888-626-2907



PO BOX 66738 #76520,
SAINT LOUIS, MO
63166-6738
USA

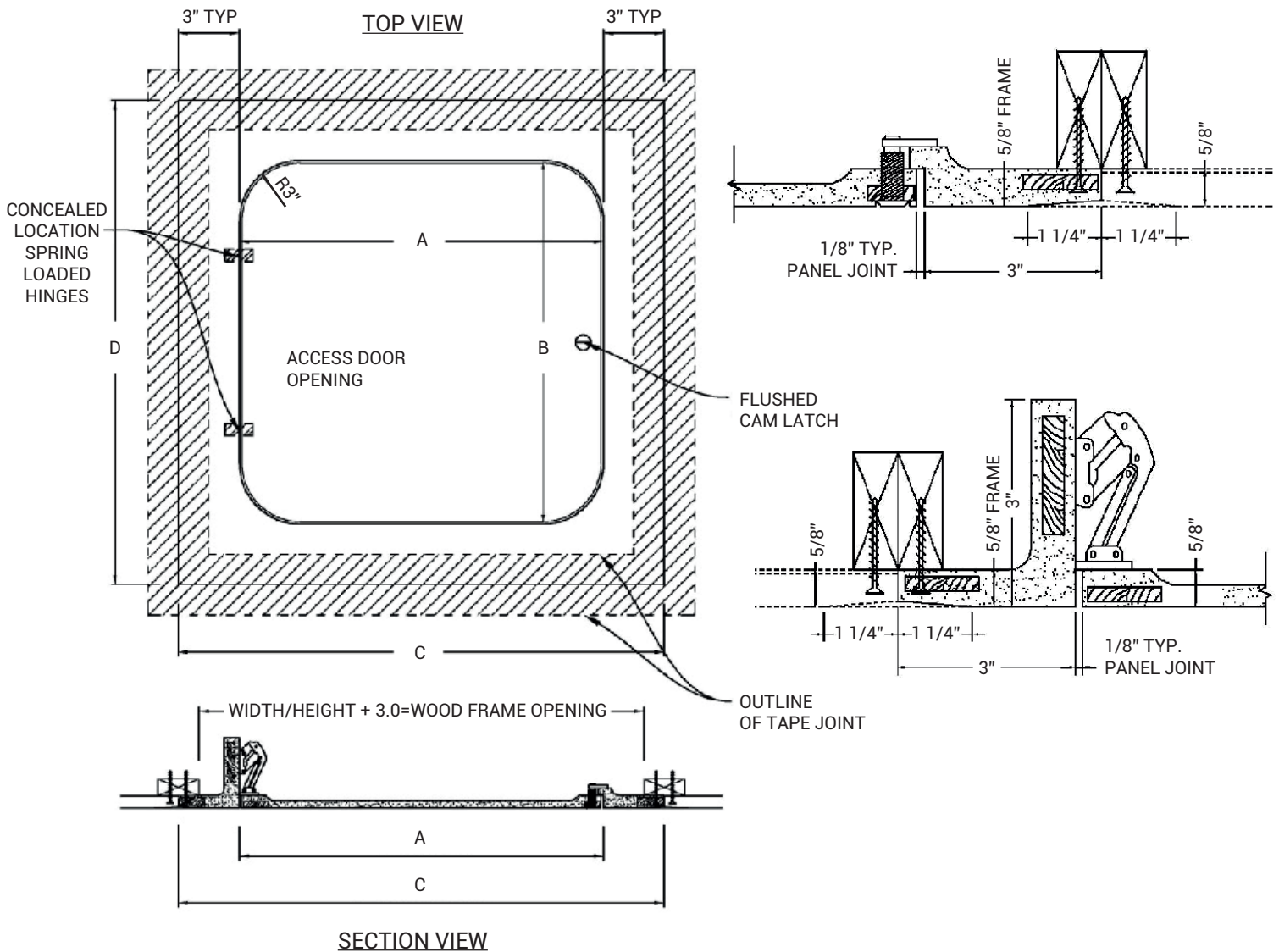


WEBSITE:
www.AccessDoorsAndPanels.com
E-MAIL:
info@AccessDoorsAndPanels.com



N GFR

CONCEALED HINGED ACCESS DOOR



MATERIALS/TECHNICAL DATA:

- High Density Gypsum Cement Plaster, Natural White
- Post-Consumer Recycled Glass (70% by volume)
- Multi-layered Fiberglass Mat
- Plywood Embedment
- Flush Cam Latch
- Concealed Spring Hinge, (2)

OPTIONS:

- - 1/2" X 1/8" Neoprene Gasket

QTY	PART #	DIM A (DOOR WIDTH)	DIM B (DOOR HEIGHT)	DIM C (DRYWALL OPENING WIDTH)	DIM D (DRYWALL OPENING HEIGHT)
	GFRR-0909	9.0"	9.0"	9.0"	9.0"
	GFRR-1212	12.0"	12.0"	12.0"	12.0"
	GFRR-1616	16.0"	16.0"	16.0"	16.0"
	GFRR-1818	18.0"	18.0"	18.0"	18.0"